

ECO-V10

REFLEX - Embedded glass studs





Hardened glass reflecting edge stud

Passive beaconing solution requiring no energy, used to indicate and mark out traffic islands, lane separators, roundabouts, tunnels. Retro-reflecting omnidirectional (360°) marking. Quick and cheap to install, resistant, durable retro-reflection properties. Studs compliant with standard EN-1463-1 / EN-1463-2.

Three dome heights available: 14 mm, 19 mm and 25 mm.

Applications

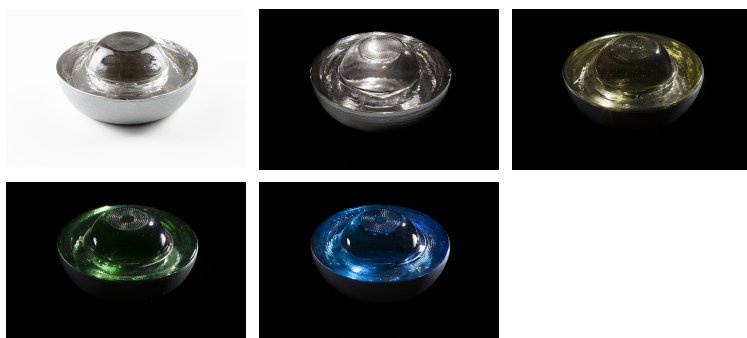
Roundabouts, Chicanes / Build-outs, Roads / Expressways

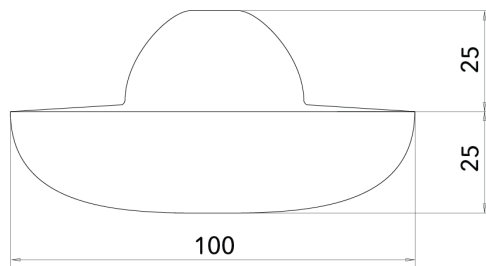
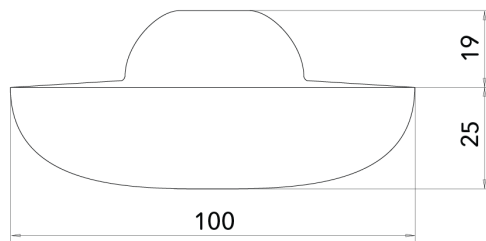
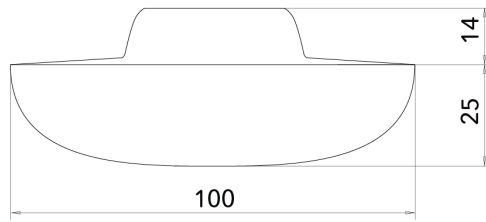
Resistance



Beaconing

180°, 360°, Grazing





Unité : mm - Tolérance +/- 0.5mm. © Eco-Innov - Tous droits réservés.

OPERATION

Embedded, hardened glass reflecting edge stud.
Retro-reflecting omnidirectional (360°) marking.

ADVANTAGES

Less maintenance required.
No energy consumption.
Quick and cheap to install.
Glass is insensitive to static electricity (no risk of dust accumulating, which is not the case with plastic reflecting studs).
Glass is cleaned easily by rain, so no manual cleaning is required.
Excellent stability of retro-reflecting properties over time.
More durable than reflecting road studs made of aluminium or plastic.
Excellent mechanical resistance.

TECHNICAL CHARACTERISTICS

Dimensions and weight

Diameter: 100 mm
Height of dome 25 mm - Weight: approximately 540 g
Height of dome 19 mm - Weight: approximately 520 g
Height of dome 14 mm - Weight: approximately 480 g

Non-skid treatment on 14 mm and 19 mm domes.

Materials

Hardened glass

Pressure resistance

More than 40 tonnes

Available colours

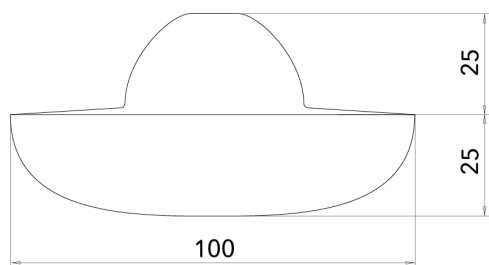
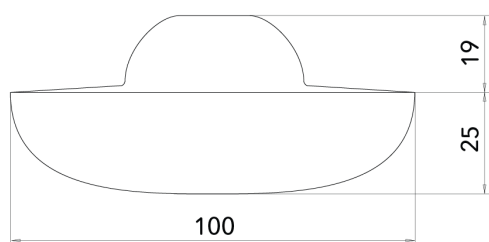
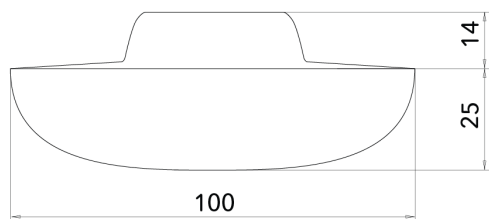
White. Other colours on request.

Conformity

Our reflecting road studs with dome heights of 14 mm and 19 mm are compliant with standard EN-1463-1 / EN-1463-2.

Remark: it is advisable to install these reflecting

studs in areas that pose no danger for users
(cyclists, pedestrians, etc.).



Unité : mm - Tolérance +/- 0.5mm. © Eco-Innov - Tous droits réservés.

1 - After deciding where the studs are to be installed, drill a hole with a minimum diameter of 106 mm and 45 mm deep.

2 - Clean and dry the hole.

3 - Fill the hole 2/3 full with 2-component epoxy adhesive or elastomeric bitumen. Do not use cement or any alkaline material that may affect the reflecting film on the base of the stud.

4 - Insert the stud into the hole. Use a mallet to level it flush with the ground. Immediately remove any residual adhesive from the stud. Leave a weight on the stud until the adhesive has set (see the manufacturer's instructions for the necessary time).

Remark: throughout these operations, make sure to protect the reflecting stud and keep it clean.

Failure to comply with these instructions may lead to the guarantee being suspended.

