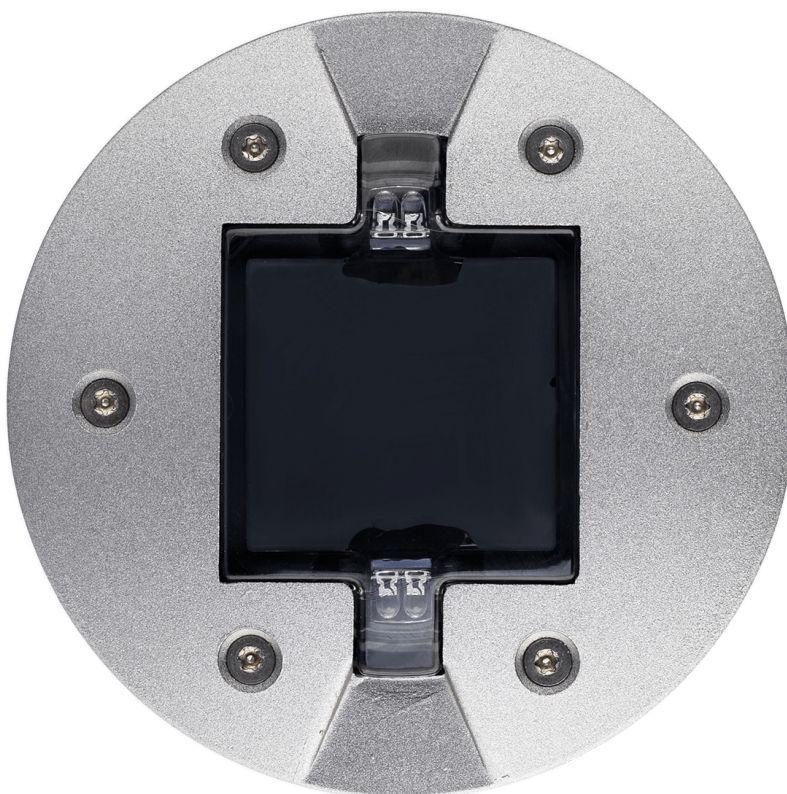
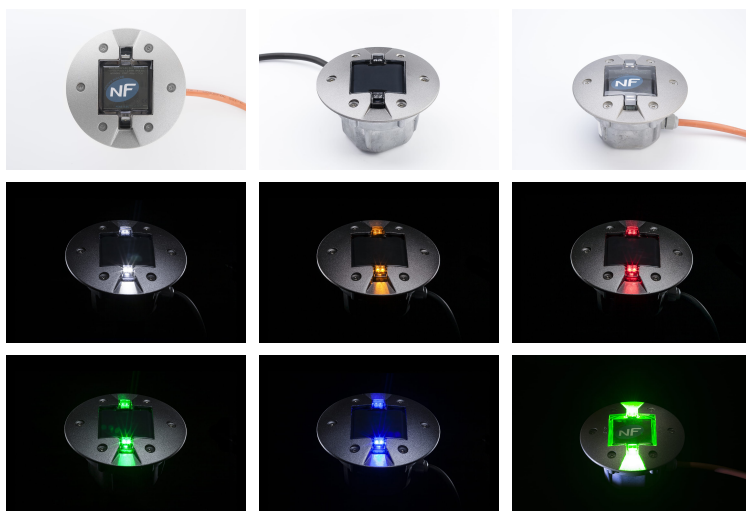
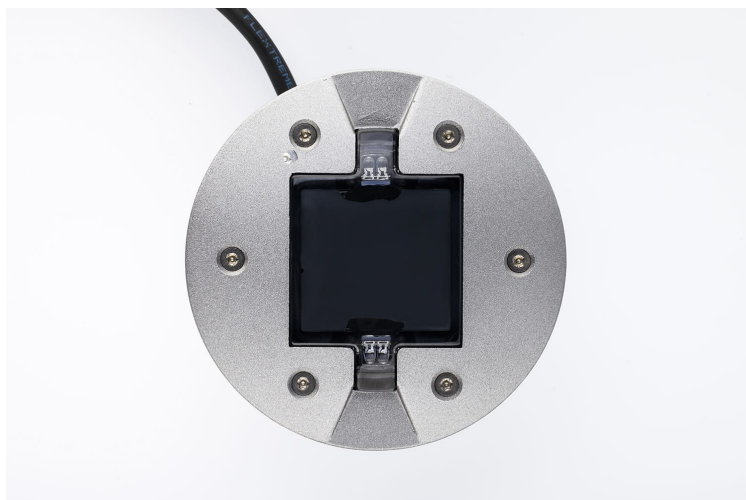


ECO-843

LOW-VOLTAGE - Embedded low-voltage studs





Embedded, hard-wired luminous stud

Low-consumption luminous beaconing solution, suitable for the pressure of pedestrians, cycles and light vehicles. Resembles a roadway nail for easy integration into urban and architectural settings. Easy maintenance via the cover.

Applications

Cycle paths, Parks / Public squares, Pontoons / Footbridges, Eco-districts, Footpaths

Resistance



Standards

IK10+ IP68
100 Joules 5 Meters

LED Colors

Red Amber 2700K 3000K 4000K 6500K Green Blue

Beaconing

2 LED, 4 LED, Constant, Blinking, Synchronized blinking, Sequential, Grazing

Customization

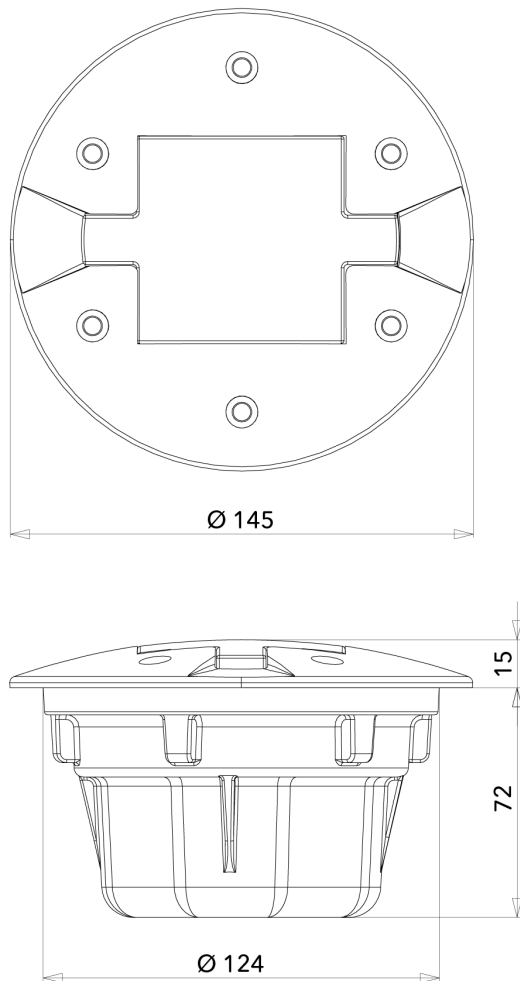
Aluminium cap, Anodised cap, Powder coated cap (RAL available), Coat of arms, Logo, Custom wiring

Recycling

ecosystem

Certifications





Cables and cable glands not shown. Unit : mm - Tolerance +/- 0.5mm. © Eco-Innov - All rights reserved.

TECHNICAL CHARACTERISTICS

Dimensions and weight

Upper diameter: 145 mm. Total height: 87 mm.
Height above roadway: 3 mm at each end / 15 mm in the centre.
Weight: approximately 1 kg.

Materials

Aluminium and Polycarbonate.
Recycling managed by ECOSYSTEM.

Power supply and consumption

12V dc or 24V dc / 0.24W to 0.96W.

Electricity class

III

Working temperature range

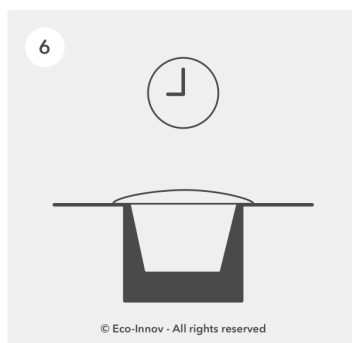
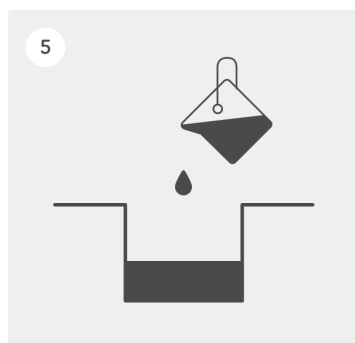
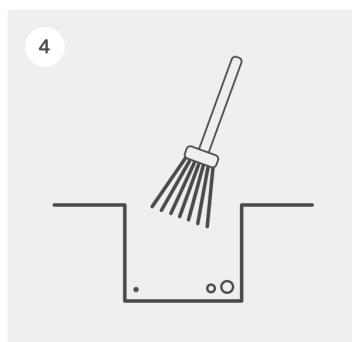
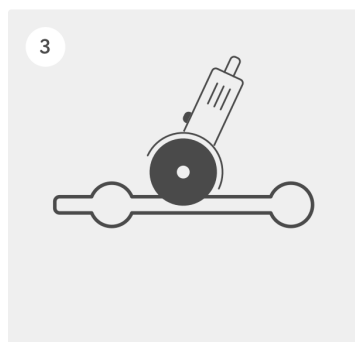
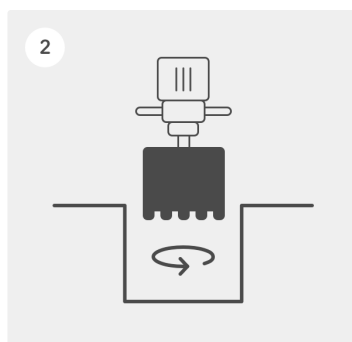
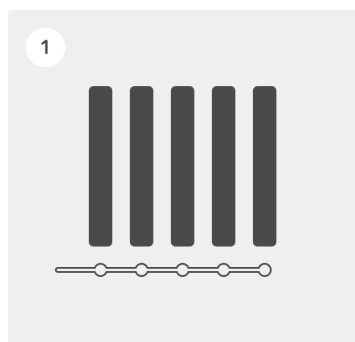
-30°C to +85°C.

Protection indices

IP 68 - 5 meters (watertightness).
IK 10+ 100 Joules (impact resistance).

LIGHTING CHARACTERISTICS

Unidirectional beaconing 2 LED or bidirectional 2x2 LED.
Constant, blinking or sequential mode.
LED colours: white, blue, green, red, amber.



1 - Identify the stud locations.

2 - Drill a hole 130 to 135 mm in diameter and 80 mm deep.

3 - Using a disk cutter, cut a groove 25 mm wide and 70 mm deep in the roadway.

4 - Clean and dry the holes and groove in order to remove all traces of dust and moisture that would affect the adhesive's performance (follow the manufacturer's instructions).

5 - Pour suitable adhesive into the holes and insert the pre-wired studs. Use a mallet to make sure they are flush with the ground surface. Make sure the LEDs are facing the right way and are parallel to the ground. Immediately clean any residual adhesive with a clean, dry rag. We recommend using Sikadur 30 two-component epoxy resin.

6 - Leave a weight on the stud until the adhesive has set (see the manufacturer's instructions for the necessary time).

IMPORTANT: Do not bend the cable where it leaves the stuffing box. Protect cables in a sheath. The guarantee may not apply if these instructions are not followed.

Lifespan and warranty

2-year warranty*

LED: 100,000 hours (> 10 years of round-the-clock operation).

* The warranty applies in the event of complete failure of the self-contained lighting system during normal usage. It covers replacement of the faulty article with an identical model delivered free of charge to destinations in metropolitan France, after the faulty article has been returned and analysed. Removal of the faulty article, installation of the new one and any mechanical damage are not covered by the warranty.

Recycling

ECO-INNOV is a founder member of a network that recycles professional WEEE, managed by the eco-organisation ECOSYSTEM. We pay for our customers' electronic safety, lighting and regulation equipment to be collected at the end of its working life in order to meet our legal obligations and help them to meet theirs.

The unique identifier FR006801_05MBCK attesting to registration in the register of producers in the EEE sector, pursuant to article L.541-10-13 of the Environmental Code, has been assigned by ADEME to the company ECO-INNOV (SIRET 451 859 409 00026). This identifier certifies its conformity with regard to its obligation to registration in the register of producers of Electrical and Electronic Equipment and the realisation of its declarations of placing on the market with Ecosystem.

ECO-INNOV is thus one of the first producers to offer its customers a simple and free solution for collecting their professional WEEE, regardless of when it was marketed. The equipment is collected via a network of professional waste collection centres and certain wholesalers.



www.ecosystem.eco

