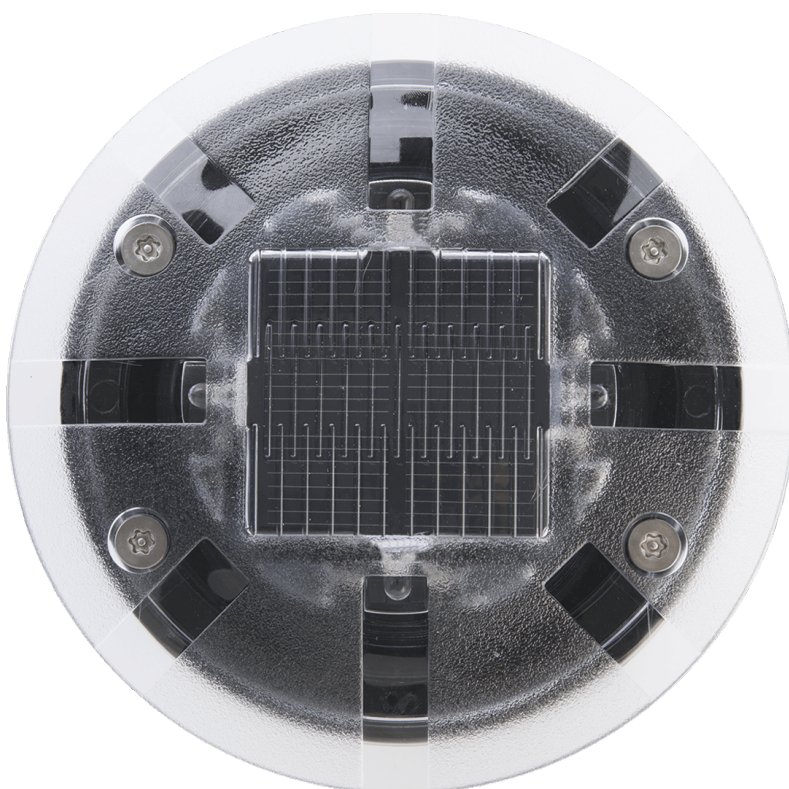
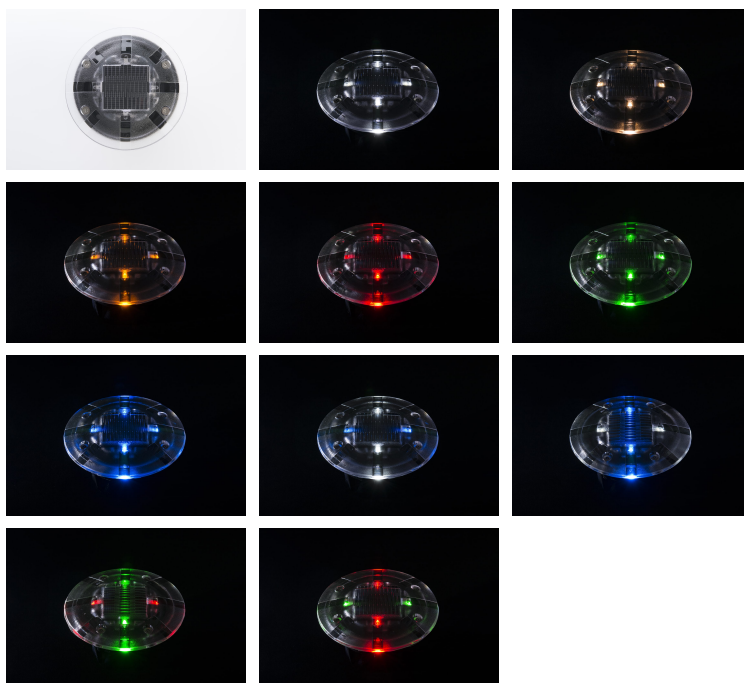


ECO-35

SOLAR - Embedded solar studs





Road embedded solar stud

Fully self-contained luminous beaconing solution suited to roads with regular heavy vehicle traffic. It resembles a roadway nail for complete integration into urban and architectural contexts. Easy maintenance via the cover.

Applications

Cycle paths, Parks / Public squares, Pontoons / Footbridges, Footpaths

Resistance



Standards



20 Joules

LED Colors



Beaconing

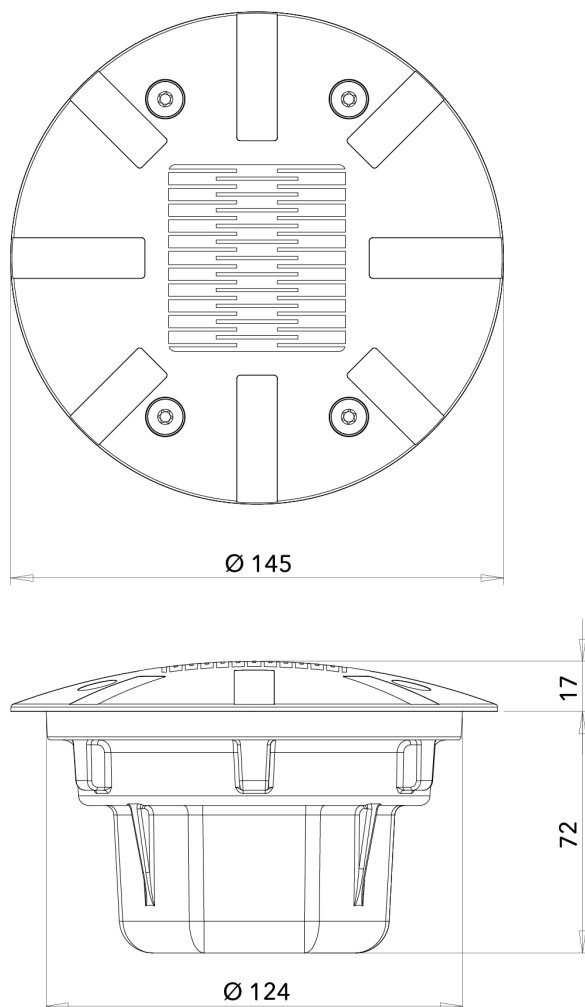
4 LED, 360°, Constant, Blinking, Grazing

Recycling



Certifications





Unité : mm - Tolérance +/- 0.5mm. © Eco-Innov - Tous droits réservés.

TECHNICAL CHARACTERISTICS

Dimensions and weight

Upper diameter: 145 mm.

Total height: 89 mm.

Height above roadway: 3 mm at each end / 15 mm in the centre.

Weight: approximately 1 Kg.

Materials

Aluminium, Polycarbonate, Silicon (photovoltaic panel).

Recycling managed by ECOSYSTEM.

Energy storage

1. Condenser.
2. Ni-Mh accumulator.

Maintenance

Solar electronic module replaced via the cover.

Working temperature range

-30°C to +85°C.

Protection indices

IP 68 (watertightness).

IK 10+ 80 Joules (impact resistance).

Pressure resistance

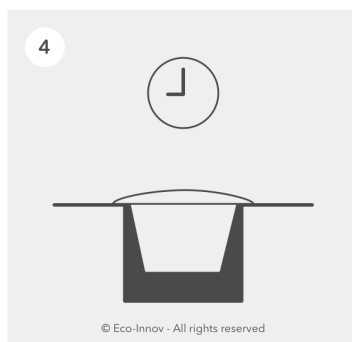
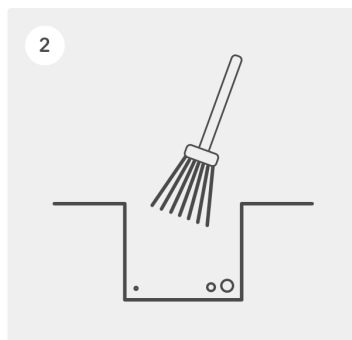
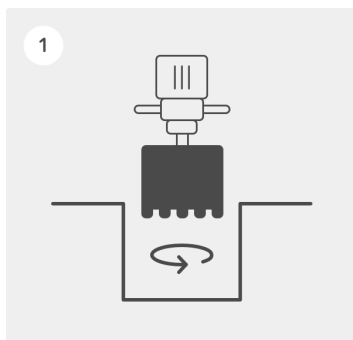
Withstands pressure of 40 tonnes.

Lighting characteristics

Unidirectional or bidirectional beaoning, 1 or 2 LEDs per side.

Constant or blinking 2.5Hz (2.5 flashes per second) $\pm 10\%$.

LED colours: white, blue, green, red, amber.



1 - After deciding where the studs are to be installed, drill a hole with a minimum diameter of 126 mm and 75 mm deep.

2 - Carefully brush and clean the hole to remove any dust and traces of damp that would affect the efficiency of the adhesive.

3 - Pour the appropriate bonding adhesive into the hole and insert the stud into the adhesive. Use a mallet to position the stud flush with the ground surface. Make sure the LEDs are facing the right way and are parallel to the ground. Immediately remove any residual adhesive from around the stud. If the stud is installed on a tarred concrete support, we recommend using Sikadur 30 two part epoxy adhesive (grey joint) or Silka Fastfix 138 FTP hydraulic mortar (black joint). On a wooden support, we recommend using less rigid adhesives (Please contact us for further information).

4 - Place a weight on the stud until the adhesive has set (refer to the instructions).

Remark: make sure to keep the module and LEDs clean and protect them throughout these operations.

Failure to comply with these instructions may lead to the guarantee being suspended.

Lifespan and warranty

BATTERY

- a. Condenser: Average lifespan more than 10 years. 2-year warranty*
- b. Ni-Mh accumulator: Average lifespan more than 5 years. 2-year warranty*

Maintenance via the cover.

* The warranty applies in the event of complete failure of the self-contained lighting system during normal usage. It covers replacement of the faulty article with an identical model delivered free of charge to destinations in metropolitan France, after the faulty article has been returned and analysed. Removal of the faulty article, installation of the new one and any mechanical damage are not covered by the warranty.

Recycling

ECO-INNOV is a founder member of a network that recycles professional WEEE, managed by the eco-organisation ECOSYSTEM. We pay for our customers' electronic safety, lighting and regulation equipment to be collected at the end of its working life in order to meet our legal obligations and help them to meet theirs.

The unique identifier FR006801_05MBCK attesting to registration in the register of producers in the EEE sector, pursuant to article L.541-10-13 of the Environmental Code, has been assigned by ADEME to the company ECO-INNOV (SIRET 451 859 409 00026). This identifier certifies its conformity with regard to its obligation to registration in the register of producers of Electrical and Electronic Equipment and the realisation of its declarations of placing on the market with Ecosystem.

ECO-INNOV is thus one of the first producers to offer its customers a simple and free solution for collecting their professional WEEE, regardless of when it was marketed. The equipment is collected via a network of professional waste collection centres and certain wholesalers.



www.ecosystem.eco